

\* Money-Back Guarantee does not include shipping, handling and processing fees.



confidently recommended  
our Company and  
products to their  
family and friends  
each and every day.

You can tell a lot about a company by the type  
of guarantee it offers. That's why Xooma offers  
you a 100% Money-Back Guarantee\* on ALL  
of our wellness products for a full 30 days. Our  
Commitment to premier quality and customer  
satisfaction is a major reason why people

For more information or to place an order, please contact:



Save 20% - 50% off retail prices. Become a Member today!



## PRODUCT CATALOG



# ADD LIFE to your YEARS

## PRODUCT CATALOG

# Congratulations!

Xooma Worldwide's mission of improving people's lives began long before its formation. Over 20 years ago the original founders of The Health Network, Inc. began assembling a powerful line of cutting-edge health and wellness products that can only be described one way – life-changing!

Xooma Worldwide is built upon this 20+ year-old, rock-solid foundation with the vision of helping people Alkalize, Cleanse, Nourish, Balance and Energize their bodies. This has allowed us to create one of the finest companies and product lines in the industry.



**XOOMA**<sup>™</sup>  
WORLDWIDE

### ***You've Discovered the Best-Kept Secret in the Wellness Industry!***

Since opening our doors for business, we have received thousands of testimonials from people around the world praising our products. We know that when you spend the time to educate and help people regain and maintain their health, the benefits it can provide are endless.

At the core of Xooma's success and long-term stability are its superior health and wellness products combined with the strong infrastructure of The Health Network - which is one of the few companies that has stood "the test of time" in our industry. As Xooma Worldwide continues to grow and positively impact the lives of countless people around the world, we invite you to join us in our mission to *Change the Health of a Generation.*



**Save 20% – 50% off retail prices. Become a Member today!**

**XOOMA**<sup>™</sup>  
WORLDWIDE

Xooma Worldwide's mission is to provide consumers with the finest quality wellness products in order to help them achieve optimal health, while at the same time providing honest value, outstanding leadership, service, education and marketing tools our independent Members can use to earn significant incomes and enjoy exciting careers in the rapidly growing wellness industry.

# Transform Your Water – Transform Your Life

## X20™ (30 sachets)

Why X20? Alkalizing, Anti-Aging, Anti-oxidant, Electrolytes, Hydration, Absorption, and Disease Prevention are all words that can be attributed to an X20 sachet added to your water. Essential minerals from the X20 sachet are released as ions into your water, allowing them to be absorbed quickly and easily at the cellular level. X20 transforms plain water into a powerful alkaline beverage which can help fight against acidic & unhealthy conditions in the body caused by today's fast-paced lifestyles and is the perfect addition to any supplement program.

From adults to children and from athletes to the elderly, everyone can benefit from this simple, yet powerful product. Whether you're at home, at the office or on the go, just drop a sachet in your water, shake, and drink. Discover how great it feels to hydrate, mineralize and revitalize daily with X20!



## Xooma Water Bottle

This exclusive bottle is BPS-Free and also made from a unique "BPA-Free" resin which is certified for safety when beverages are consumed from this bottle. It will not retain odor or taste, and has a wide mouth for easy filling and cleaning. It comes in an eye-catching luminescent (Xooma Green) color and has an easy to drink from flip-up spout. Not only is the color green, this is a "green product" in that it is made from recyclable materials. Since it can be re-used on a daily basis, it helps reduce the environmental waste created by popular bottled beverages.

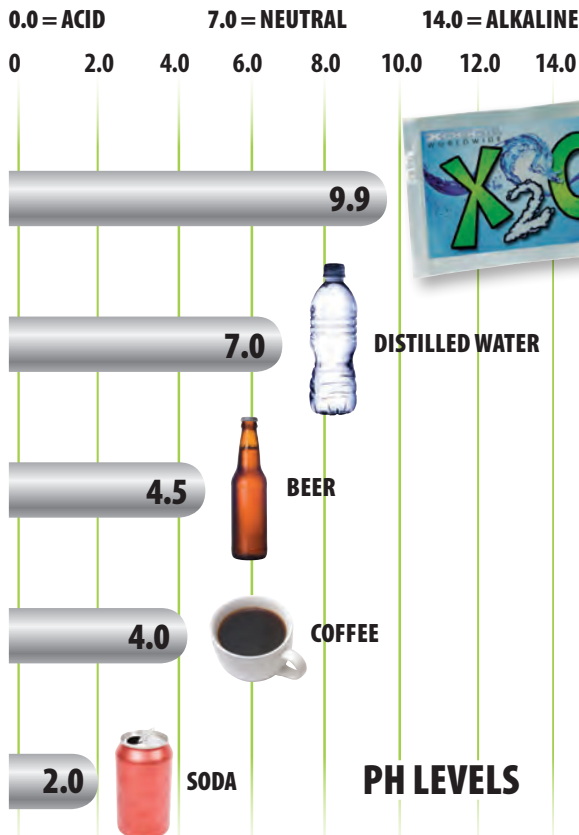


Save 20% – 50% off retail prices. Become a Member today!

## Is Your Body Acidic?

The foundation of healthy pH balance is drinking plenty of alkaline water. The easiest way to "supercharge" the alkalinity of your water is by drinking Xtreme X20 every day!

Unfortunately, most of the foods and beverages we consume on a daily basis cause our bodies to become acidic. And the more acidic we are, the more likely we are to store fat and experience poor health. But, with just one sachet of X20, you can transform your water into a highly alkaline beverage that helps to neutralize acid in your body and trigger the release of excess fat and improve your overall health.



*"You can trace every sickness, every disease and every ailment to a mineral deficiency."*

– Dr. Linus Pauling  
Two-time Nobel Prize Winner

*"The cells of a healthy body are alkaline while the cells of a diseased body are acidic."*

– Dr. Arthur Guyton  
Author of "Textbook of Medical Physiology"



# The World's First Energy Think Drink

## FocusUP® (12 stick packets)

Say good-bye to those unhealthy energy drinks and experience the amazing benefits of FocusUP – the world's first “think drink” that will energize you for hours. Based on over 10 years of research in the fields of nutrition and brain performance, this one-of-a-kind product is positively changing the lives of thousands of people around the world.

Uniquely formulated, the internationally researched nutrients and botanical ingredients in FocusUP will *improve your*:

- **Focus**
- **Concentration**
- **Memory**
- **Mood**
- **Mental Performance**

**NO** sugar, **NO** fake sweeteners - just clean energy and a sharp mind. FocusUP is more than an energy drink because it also supports optimal brain performance for adults of any age. The refreshing natural berry flavor tastes great and at just 10 calories per serving, it's a guilt-free beverage you can enjoy every day.

Just slip the stick packets into your pocket or purse for “ultimate mental energy” any time, any place. Simply grab a bottle of water, pour in the drink mix, shake and enjoy!

## It's YOUR Body – Drink Smart!

Save 20% – 50% off retail prices. Become a Member today!



**XOONNA**  
WORLDWIDE

## FocusUP® Capsules (45 capsules)

Get the same great energy and brain-boosting ingredients found in the FocusUP drink mix in the form of a capsule. FocusUP capsules are a fast and easy way to enjoy all the benefits this one-of-a-kind supplement provides. Also available in convenient 3-capsule single serving packets which are ideal when you're traveling away from home.



# Melt Away Body Fat - 24 Hours a Day The MetaboWize™ System

## MetaboWize™ AM Formula (60 capsules)

The MetaboWize™ AM Formula is a proprietary morning and/or mid afternoon metabolic, thyroid and mood support system that helps stimulate your metabolism by working to elevate the brain chemical norepinephrine, the natural “feel good/fat loss” chemical and by optimizing the body’s methylation process. The body is then encouraged to burn more fat and create more energy. By supporting optimal thyroid function and reducing food cravings, a healthy metabolism and increased fat reduction are ensured.



## MetaboWize™ AM Xtra (60 capsules)

All the great benefits of our original AM Formula with double the energy boosting power.

## MetaboWize™ PM Formula (60 capsules)

The MetaboWize™ PM Formula controls cortisol which is often associated with a dysfunctional metabolism, poor health and obesity. It also contains nutrients that help to boost levels of the feel-good brain chemical serotonin, which is necessary for effective relaxation, deep sleep, craving control and fat loss. The MetaboWize PM Formula will help maintain an optimal metabolic rate, help reduce excess stress hormones, help support a healthy sleep cycle and help repair, renew and reactivate muscle cells to optimize metabolic function.



## MetaboWize™ Nature's Body Cleanse (60 Capsules)

Toxin accumulation caused by slow bowel transit time can lead to a reduction in overall health and well-being. Nature's Body Cleanse increases the consumption of dietary fiber, which helps decrease bowel transit time by gently cleansing the intestinal tract. Nature's Body Cleanse enhances bowel ecology, regularity, and promotes optimal nutrient absorption. Regular digestive system cleansing also promotes fast and effective weight loss.

XOONAWORLDWIDE™



Save 20% – 50% off retail prices. Become a Member today!

## MetaboWize™ Protein Fiber Shake (30 servings)

The one-of-a-kind specialized fiber blend within the MetaboWize Protein Fiber Shake consists of fibers that expand upon delivery to the stomach, ultimately helping to further curb appetite and cravings, while the other fibers work as a food source for healthy bacteria - required to maintain optimal digestion, absorption of nutrients and elimination. This one-two punch (premium quality whey proteins and functional fibers) and the unsurpassed quality of all ingredients within this proprietary formula is what truly sets the MetaboWize Protein Fiber Shake apart from anything else in the market. Best of all, it mixes easily and tastes great! Discover the difference for yourself.

Available in **Chocolate** and **Tropical Vanilla**



Purchase all 3 products in the “Core Package” and enjoy extra savings!

# A Breakthrough Discovery for Cardiovascular Health and Inflammation Control

## KardiaXyme™ (60 capsules)

KardiaXyme is a breakthrough discovery for cardiovascular health and inflammation control. Years of clinical research and over 35 million dollars have been invested to uncover numerous health benefits offered by the powerful nutrients found in KardiaXyme. These amazing health benefits and documented results are based on specially chosen ingredients in this formula.

A product of this "accidental discovery," KardiaXyme is a unique blend of hand-selected varieties of algae and an exclusive source of marine minerals that are grown, harvested and offered as a superior, one-of-a-kind algae supplement.



*"Chronic inflammation in the body is directly linked to heart disease and other diseases such as asthma, arthritis, inflammatory bowel disease, irritable bowel syndrome, obesity and cancer." KardiaXyme's exclusive formula contains a potent and unique blend of 14 different sea-based, highly bioactive polyphenols that optimize cellular, cardiovascular and metabolic health to support lifelong physical and mental wellness.*

## Marine Algae and Mineral Infusion A Miracle from the Sea!

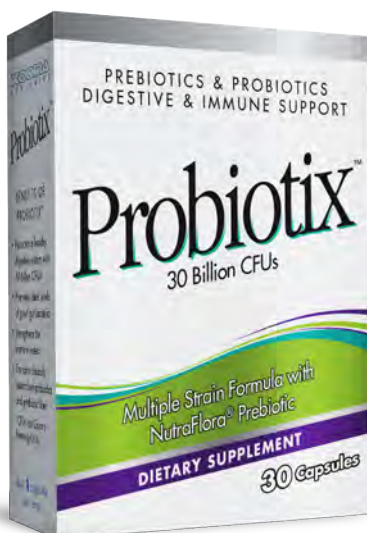
*"This carefully selected combination of nutrients in KardiaXyme harnesses the power of nature to provide the human body with the kind of health benefits that can only be described in one word – AMAZING!"*

Save 20% – 50% off retail prices. Become a Member today!



**XOOMA**  
WORLDWIDE

## For a healthy digestive and strong immune system



## Probiotix™ (30 capsules)

Probiotix™ is a multiple strain probiotic formula for digestive and immune support. Each strain in this exclusive formula has been clinically researched and serves a strategic purpose for your health. With 30 billion CFUs, Probiotix supports ideal levels of good gut bacteria for a healthy digestive system and strong immune system. This formula also contains a premier prebiotic fiber complex to increase the amount of 'friendly flora' within your digestive tract. Do you need this product? If you take antibiotics or other prescription medications, consume sugar, eat processed foods, drink tap water, or experience emotional stress, then you'll love the way Probiotix will make you feel.

There are approximately 40 diseases that have been linked to bacterial imbalance in the body, according to the National Institute of Diabetes and Digestive and Kidney Diseases.

Daily use of Probiotix\* can lead to increased energy levels, improved metabolism, better digestion and healthy elimination while also helping to reduce gas, bloating, and chronic fatigue. All these benefits with just one capsule per day!

# Energetic Cellular Rejuvenation

## Natural Collection™

(8 ounces / 240 ml)

Natural Collection is a uniquely formulated wellness compound that contains vitamin, herbal and mineral ingredients to support energetic cellular rejuvenation. This breakthrough supplement is designed to boost immune response and support the healing process of damaged cells.\*

Natural Collection works to target the energy charge transfer mechanism of the cells (the mitochondria) while also protecting them from free radical damage.\*

This exclusive formulation contains powerful antioxidants which have been shown in research to help neutralize harmful free radicals that damage our cells and lead to premature aging. These free radicals are then converted into a usable energy source for our cells.\*



**XOONNA™**  
WORLDWIDE

Save 20% – 50% off retail prices. Become a Member today!

## Creating An Environment Where Healthy Cells Can Thrive

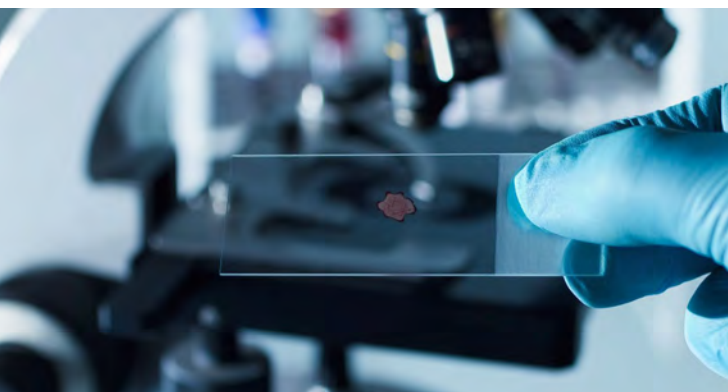
Natural Collection provides considerable nutritional support, helping to enable optimum functioning of essential body systems.\*

### Fast Acting and Easy to Consume

Natural Collection is a liquid supplement which absorbs quickly and is extremely easy to consume – especially for people who have difficulty swallowing pills or capsules. Each pharmaceutical grade bottle contains 48 servings.

### Areas of support include:\*

- Assists in preventing cell damage
- Supports oxygenation of cells and tissues
- Provides strong antioxidant protection
- Supports proper cellular function within the body
- Promotes the elimination of harmful substances and toxins from the body



Optimal Health Begins at  
the Cellular Level

# Feed Your Mind



Clinically Tested Nutrients

## RevitalMind™ (60 capsules)

RevitalMind™ is an extraordinary brain support formula that optimizes focus, concentration, memory and mental performance. Research has shown direct benefits from the key nutrients found in this brand new formulation. Through a proprietary blend, these carefully selected ingredients are synergistically combined with other vitamins and minerals that energize and support the brain's ability to operate at an optimal state.

## Food for Thought

With RevitalMind, you can “feed your mind” the nutrients it craves. Long-term, these nutrients can be both preventative and restorative for optimal brain functioning. They also fight against age-related mental decline.

## How is RevitalMind different from FocusUP™?

RevitalMind is a clinical-level brain support formula that can significantly improve memory, concentration and mental performance.

While FocusUP™ also supports increased mental performance, it is designed to be a daily energizer with a more affordable price point.

**XOONA**  
WORLDWIDE



Save 20% – 50% off retail prices. Become a Member today!

## What can the nutrients in the RevitalMind™ formula do for you?

With not just one but several key ingredients that support and optimize brain function, RevitalMind is the product of leading-edge science. This one-of-a-kind formula contains clinically-tested nutrients which help boost neurotransmitter activity that is responsible for increased cognitive function.

***“Age is the greatest risk factor for cognitive impairment. An estimated 5.4 million Americans currently have Alzheimer’s disease -- the most well-known form of cognitive impairment—with 5.2 million of them 65 or older.”***

***-U.S. Alzheimer’s Association***



- Boosts overall brain function
- Optimizes mental focus and performance
- Promotes the brain’s production of energy
- Improves concentration and memory
- Enhances thinking skills and learning
- Combats free radicals through antioxidant agents



Quality you can depend on through clinically-researched and trademarked ingredients.



## Silver MAX™ (8 ounces/240 ml)

Across the globe, for thousands of years, silver has played an essential role in safeguarding human health. Today, as more people embrace natural ways to maintain their health and well-being, silver is experiencing a resurgence in popularity. And Silver MAX is leading the way, with technologically unparalleled silver preparations for internal and external use that deliver real results.

Thanks to the ultra-small particle size and high percentage of positively charged silver ions, one bottle of Silver MAX goes a long way. Small dosage amounts are capable of generating quick and positive results which gives you far more value for your money.

## Silver MAX™ First Aid Gel (2 ounces/120ml)

Silver MAX Homeopathic Gel is so effective for such a broad spectrum of minor wounds, you can now replace your over-the-counter (OTC) antiseptic cream, burn spray, calamine lotion, and acne cream with this one product.

This Homeopathic First Aid Gel provides fast healing of minor cuts, scrapes, minor burns, bites, bruises, minor skin infections, and more.

It works in four ways:

- Reduces topical pain
- Fights minor skin infection
- Calms minor skin inflammation
- Promotes healing of the skin

The perfect alternative to conventional and herbal topical treatments, the gel contains no synthetic ingredients. It is safe, child-friendly, applies easily and dries fast.

# Immune System Support that Delivers Real Results!

- Safe & proven effective concentration of 10 ppm (parts per million)
- Smallest average particle size ever seen in a silver product: 0.8 nm (nanometers) / 0.0008 microns / 8 Angstroms
- 96% actively charged particles
- Contains 99.99% pure silver
- Made with ultra-pure, medical-grade water
- Crystal clear and virtually tasteless



XOONMA™  
WORLDWIDE



Save 20% – 50% off retail prices. Become a Member today!

## The taste you crave. The health benefits you want. None of the guilt!

## Chocolate Fix Mix™ (14 single packets)

For thousands of years, chocolate has been a sweet, decadently delightful and irresistible treat, no matter its form. However, what's also been associated with chocolate are calories, fat, and worst of all, guilt. But, what if you could satisfy those cravings with chocolate that was actually healthy? Although "healthy chocolate" that tastes great sounds too good to be true, this product will make you a believer.

Chocolate Fix is a delicious chocolate drink mix made with natural and organic ingredients that deliver a whopping 5 grams of pure cocoa in every serving. Simply add this delicious powder mix to either water or milk and enjoy all the health benefits of chocolate without all the calories and fat.

Served hot or cold, this indulgent chocolate drink offers many health benefits. The cocoa blend is rich in polyphenols (antioxidant compounds) which have been shown to help support cardiovascular health.\* To further enhance the healthy benefits of Chocolate Fix, we included one of nature's best "superfoods", coconut oil, along with a high quality fruit and vegetable blend.



With just 50 calories per serving and NO artificial sweeteners, flavors, colors or preservatives, this is a chocolate treat your entire family can feel good about.

Convenient, individual serving packets make it easy to enjoy Chocolate Fix just about anywhere. From home, at the office, in school or on the go, it's easy to satisfy those chocolate cravings and get your Chocolate Fix!

♥ **More to LOVE:** Chocolate Fix is dairy-free, gluten-free and nut-free.

# Give Water More Than Just Great Taste

## Xooma BLAST™ (20 stick packets)

Now, you can transform your water with a “blast” of flavor while you provide powerful antioxidant protection for your entire body. Forget those high-calorie sugary drinks or flavored beverages filled with artificial sweeteners, colors, and other chemicals. With Xooma BLAST you can now enjoy a guilt-free, great tasting, natural beverage with only 5 calories per serving. Plus, there’s another exciting benefit to this unique product. . .

Knowing that most children and teens don’t consume the recommended amount (servings) of fruits and veggies in their daily diet, each drink packet contains 1.5 servings of whole food derived fruits and vegetables. Xooma BLAST has all the taste kids crave with none of the worry for Moms and Dads who are concerned about their children’s health. Most parents tell us that Xooma BLAST is the easiest way to get their children to consume more servings of fruits and veggies each day.

Xooma BLAST comes in small portable drink packets. They are easy to carry, fit perfectly in a pocket or purse and are ready to use when you are. Xooma BLAST also allows you to choose your own flavor strength.



Available in: Strawberry Lemonade, GrapeXcape, Orange Crave, Cherry Lime and Coconut Crush flavors.

## Xooma BLAST™ is perfect for children and teens.

**XOOMA**  
WORLDWIDE



Save 20% – 50% off retail prices. Become a Member today!



## Healthy Never Tasted This Good!



- Made with **natural ingredients**
- **NO** artificial sweeteners, colors or preservatives
- **Just 5 calories** & almost **NO** carbohydrates
- **LOW glycemic value.** Won't raise blood sugar levels or trigger fat storage in the body
- **1.5 Servings** of real **whole-food derived** fruit and vegetables plus an ORAC (antioxidant) score of 2500

“Studies have found growing evidence that antioxidants (foods with high ORAC ratings) may protect the body’s cells from the kind of cell damage that can lead to cancer.”

- American Institute for Cancer Research



# Unmatched Quality and Performance

**FACT:** The most expensive multivitamin you'll ever take is the one that doesn't work.

## LifeSource™ (120 capsules)

LifeSource is a premium quality multivitamin, multi-mineral formula that contains specialized nutrients that are proven to positively impact biological aging systems (brain health, eye health, cellular integrity and blood sugar chemistry).

This synergistic formula contains optimal daily intakes or ODI's of each vitamin and mineral with the added benefit of additional research revealing proven nutrients that impact the biological aging of various cells and genes throughout the body. Higher quality ingredients lead to better absorption by the body, increased health benefits, and a better value for your money. With the addition of four powerful longevity factors, such as Alpha Lipoic Acid, Resveratrol, Lutein and DMAE, you'll understand why LifeSource is unmatched for quality and performance in the multivitamin category!

Forget about those mass-marketed multivitamins at your local retail store that attempt to look like a "bargain". Instead, try LifeSource and experience the difference a true high quality supplement can deliver to your body.



## Quality Ingredients Lead to Better Absorption



**XOONA™**  
WORLDWIDE

**Save 20% – 50% off retail prices. Become a Member today!**

## Pet20™ (30 packets)

Your furry family members rely on you to care for their health needs. Just like X20 does for people, Pet20 packets transform your pet's water by allowing for improved hydration, adding essential trace minerals & electrolytes and increasing the alkalinity of the water they drink.

This "pet grade" version of X20 costs less to manufacture which allows us to pass the extra savings on to you. Transform the quality of your pet's water and support their good health. Discover the difference Pet20 treated water can make for your pet.



## X20 PM (60 capsules)

While X20 sachets should be your main choice throughout the day, the X20 PM capsules are the perfect addition to your daily regimen – especially if you tend to drink less water later in the evening.

X20 PM capsules contain the same organic mineral complex of calcium, magnesium and 70 other essential trace minerals found in the X20 sachets. However, in addition to the X20 mineral complex we've also added vitamin D and an SBO complex (soil-based organisms) to support proper digestion and help your body utilize more of the nutrients in each capsule. This special formula also supports easier and more restful sleep when taken before bedtime.

# One-of-a-kind Formulas That Offer Amazing Value

## **Assimilator™** (90 capsules)

Assimilator is a potent combination of natural plant enzymes in a proprietary formulation with essential ionic trace minerals. For many people, “enzymes” are the missing ingredient in their daily diet. Assimilator contains the enzymes necessary for optimal digestion. This powerful natural supplement helps to unlock the nutrients within your food to make them more readily available to your body. Assimilator is also designed to promote the healthy oxygen-carrying ability of red blood cells enabling better nutrient utilization, energy production, optimal cellular health and immune system competence. Assimilator promotes cellular health, enhancing the removal of unwanted waste and debris from the cellular environment.

## **Berry Balance™** (60 capsules)

Berry Balance is a powerful and unique multi-berry extract with several patented and trademarked ingredient complexes. In vivo and in vitro studies have shown that berries, rich in anthocyanins, possess many biological functions that deliver potent health benefits, including antioxidant activity, cardiovascular protection, blood sugar support, enhanced brain function and mental clarity, anti-aging properties, urinary tract health, healthy vision and skin care. A one-of-a-kind formula that offers amazing value!



**XOOMA™**  
WORLDWIDE



**Save 20% – 50% off retail prices. Become a Member today!**

# Nutrients for Active Lifestyles

## **Omega 3/75™**

(60 soft gels)

The Omega 3/75 formula is a unique and powerful combination of pure fish oils. It contains a trademarked blend of potent EFAs (Essential Fatty Acids) to help you maintain a healthy cardiovascular system. Our Shark Liver Oil is the highest grade available with Squalene and Alkoxyglycerol to help maintain the health of your body's natural immune/ defense system. Both oils are directly imported and derived from deep cold-water fish off the coast of Scandinavia to ensure premium quality and purity. A one-of-a-kind formula!



Proven Health Benefits



# Noticeable Results with Very First Bottle!

## Joint Health™ (90 caplets)

Over 10 years of clinical research and use have demonstrated that OptiMSM®, CMO (cerasomal-cis-9-cetylmyristoleate) and Glucosamine are proven to protect and support joints, tendons, ligaments, cartilage, muscles, connective tissues and bones, and aid in post injury joint repair. This synergistic formula contains the clinical dosage levels of these research proven ingredients and is ideal for anyone experiencing age or exercise induced joint damage. Most people report noticeable results with their very first bottle!

## Ellagic Acid™ (150 capsules)

Ellagic Acid nutrients differ from those derived from other sources, such as pomegranates and walnuts. They are potent natural extracts, derived from a unique variety of red raspberry seeds and have been shown to promote apoptosis (the turn-off process leading to natural cell death) in cancer cells with no harmful effects to normal cells. Ellagic Acid can promote healthy cell function with regular use. Five capsules a day provides 40 mg of Ellagic Acid extract, equal to the amounts successfully used in the studies at Hollings Cancer Institute, Medical University of South Carolina.



**Save 20% – 50% off retail prices. Become a Member today!**



# Repair, Nourish & BALANCE



## Life's Harmony™ (2 ounces/ 56 grams)

Life's Harmony is designed to promote healthy progesterone levels essential for hormonal balance in women of all ages (and also in men). Life's Harmony promotes wellness and all natural relief through a gentle and natural internal balance. This pure, non-synthetic formula contains all-natural ingredients that are proven to be safe and effective and easily absorbed through the skin. Each tube contains approximately 1200 mg of Natural Progesterone which is biologically identical to what our body produces. Women often report positive results within 30 days when used as directed.



### Metabowize AM™

Proprietary Metabolic, Thyroid And Craving Control Formula

**Directions:** As a dietary supplement, take 1 or 2 capsules in the morning-preferably before exercise and (if needed) another capsule in the early afternoon.

**Serving Size:** 1 Capsule • **Servings Per Container:** 60

	Amount Per Serving	% DV**
Vitamin B6 <i>(as pyridoxal 5-phosphate)</i>	5mg	250%
Folic acid	500mcg	125%
Vitamin B12 <i>(as cyanocobalamin)</i>	250mcg	4,167%
Selenium <i>(as selenomethionine)</i>	100mcg	143%
L-Tyrosine	500mg	**
Appetite Control Blend <i>(standardized co-extraction of green tea leaf, cinnamon twig and galangal rhizome)</i>	150mg	**
Caffeine <i>(from Brazilian cocoa extract)</i>	100mg	**
Dulse algae	25mg	**
Guggulsterones E & Z (95%)	5mg	**

\*\*Daily Values not established

**Other Ingredients:** Gelatin, microcrystalline cellulose, magnesium stearate, and silica.

### Metabowize AMXTRA™

Increased Energy And Metabolism Boosting Formula

**Directions:** As a dietary supplement, take 1 or 2 capsules in the morning-preferably before exercise and (if needed) another capsule in the early afternoon.

**Serving Size:** 1 Capsule • **Servings Per Container:** 60

	Amount Per Serving	% DV**
Vitamin B6 <i>(as pyridoxal 5-phosphate)</i>	5mg	250%
Folic acid	500mcg	125%
Vitamin B12 <i>(as cyanocobalamin)</i>	250mcg	4,167%
Selenium <i>(as selenomethionine)</i>	100mcg	143%
L-Tyrosine	250mg	**
Caffeine <i>(from Brazilian cocoa extract)</i>	200mg	**
Appetite Control Blend <i>(standardized co-extraction of green tea leaf, cinnamon twig and galangal rhizome)</i>	125mg	**
Raspberry Ketones	100mg	**
Dulse algae	25mg	**
Theobromine	50mg	**
Guggulsterones E & Z (95%)	5mg	**

\*\*Daily Values not established

**Other Ingredients:** Gelatin, microcrystalline cellulose, magnesium stearate, and silica.

### Metabowize PM™

Proprietary Evening Stress Reducing Sleep Support Formula

**Directions:** As a dietary supplement, take 1 or 2 capsules in the evening approximately 30 minutes prior to sleeping.

**Serving Size:** 2 capsules • **Servings Per Container:** 30

	Amount Per Serving	% DV**
Magnesium <i>(as magnesium amino acid chelate)</i>	40mg	10%
5-Hydroxytryptophan (5-HTP) <i>(from Griffonia simplicifolia seeds)</i>	50mg	**
Ashwagandha root extract	250mg	**
Magnolia bark extract	150mg	**
Melatonin	0.5mg	**
Wild jujube seed extract	150mg	**

\*\*Daily Values not established

**Other Ingredients:** Maltodextrin, gelatin, cellulose, magnesium stearate, and silica.

### Metabowize Protein Fiber Shake™

Ultra Pure Protein With Functional Fiber Blend  
*(Chocolate)*

**Suggested Use:** Consume one serving as close to finishing a workout as possible (within 60 minutes for best results). Mix 2 level scoops/1 serving (about 32g) with 8 ounces (250 mL) of water in Xooma Shaker cup or blender set at low speed.

**Serving Size:** 2 Level Scoops (about 32g)

**Servings Per Container:** About 30

	Amount Per Serving	% DV**
Calories	130	
Calories from Fat	25	
Total Fat	2.5g	4%
Saturated fat	1.5g	8%
Trans fat	0g	
Cholesterol	40mg	13%
Sodium	110mg	5%
Potassium	170mg	5%
Total Carb	8g	3%
Fiber	5g	20%
Sugars	2g	
Protein	20g	
Vitamin A	0%	
Vitamin C	0%	
Calcium	10%	
Iron	6%	

\*Percent Daily Values are based on a 2,000 calorie diet

\*\*Daily values not established

### MetaboWize Protein Microfraction

Alpha-Lactalbumin	14-24%
Beta-lactoglobulin	40-60%
Immunoglobulin	6-10%
Lactoferrin	0.3-1.1%
Glycomacropeptides	11-28%

**Typical Branched Chain Amino Acid (BCAA)**

**Profile Per Serving**

Isoleucine	1350 mg
Leucine	2320mg
Valine	1280mg

**Ingredients:** Instantized Whey Protein

Concentrate, Instantized Whey Protein Isolate, Fiber Blend (Inulin, Oat Beta Glucan, Guar Gum, Carboxy Methylcellulose), Cocoa, Glycine, Taurine, Organic Cane Juice Solids, Natural Flavors, Contains Less Than 1% Rebavidioside-A (from Stevia rebaudiana), Artificial Flavor, Potassium Citrate, Sodium Chloride, Soya Lecithin. Contains Milk (Whey), Soy (Lecithin). Made on machinery that also handles powder ingredients from egg, tree nuts, wheat and peanuts.

### Nature's Body Cleanse™

Internal Cleansing Formula & Enhanced Herbal Detoxification

**Suggested Use:** Adults and children over 12 years of age. Take 1-2 capsules per day as needed with pure water, ideally treated with X20. This product generally produces bowel movement in 6 to 18 hours. Do not take more than 2 capsules in a 24 hour period.

**Serving Size:** 1 Capsule • **Servings Per Container:** 60

	Amount Per Serving	% DV**
Aloe Vera Resin Concentrate <i>(Aloe Ferax)</i>	430mg	*
Aloe Vera Leaf <i>(Aloe Barbadosis)</i>	100mg	*

\*Daily Values not established

**Other Ingredients:** Cellulose, anise seed, fennel (Foeniculum Vulgare) seed, magnesium stearate, silica, psyllium (Plantago ovata) husks, rhubarb (Rheum officinale) root, kelp (Fucus vesiculosus) leaf, flax (Linum usitatissimum) seed.

### Natural Collection™

Energetic Cellular Rejuvenation

**Suggested Use:** As a dietary supplement, take 1 teaspoon daily, prior to a meal, for regular health maintenance. For elevated health concerns and additional immune support, take 1 teaspoon, 2-3 times per day, prior to meals. For best results, hold under tongue for 30 seconds before swallowing and drink X20™ treated water afterward.

**Serving Size:** 1 teaspoon • **Servings Per Container:** 48

	Amount Per Serving	% DV†
Cholecalciferol (Vitamin D3)	2500 IU	625%
Thiamine (Vitamin B1)	500 mcg	33%
Cyanocobalamin (Vitamin B12)	1500 mcg	25,000%
Proprietary Blend:	70 mg	†
a-Lipoic Acid, Folic Acid, Ubiquinone (CoQ10), Glucosamine Sulfate, Palladium, N-Acetylcysteine		

† Daily value not established

**Other ingredients:** Aqua (Deionized Water), Glycerin, Xanthan Gum, Lecithin, Potassium Sorbate, Sodium Benzoate, Stevia Rebaudiana Extract, Natural Flavor.

### Omega 3/75™

75% Omega-3 Fatty Acid Blend

**Suggested Use:** Take 1 to 2 softgels with each meal, or as directed by your qualified healthcare consultant. For pregnancy or lactation, take 2 softgels per day, for children, give 1 softgel per day

**Serving Size:** 2 Softgels • **Servings Per Container:** 30

	Amount Per Serving	% DV**
Calories	14	
Calories from fat	14	
Total Fat	2g	3%
Proprietary Blend	1,220mg	†
*Omega-3 Fatty Acids (EPA 42%; DHA 22%)	570mg	†
Shark Liver Oil (includes 26% Alkoxylglycerols)	530mg	†
Squalene (99%)	120mg	†

\*Percent Daily Values are based on a 2,000 calorie diet

† Daily Values are not established

\*ROPUSA® 75 is a premium quality brand of stabilized Omega-3 Fatty Acids and is a registered trademark of DSM Nutritional Products.

### Probiotix™

Supports healthy digestive system and strong immune system

**Suggested Use:** Take 1 capsule daily preferably with a meal.

**Serving size:** 1 Capsule • **Servings Per Container:** 30

	Amount Per Serving	% DV**
Proprietary Blend:	30 billion CFU	*
Lactobacillus acidophilus		
Bifidobacterium lactis		
Bifidobacterium longum		
Lactobacillus rhamnosus		
Lactobacillus casei		
Lactobacillus plantarum		
Lactobacillus paracasei		
Bifidobacterium bifidum		
NutraFlora® short-chain fructo-oligosaccharides	125 mg	*

\*Daily Value (DV) not established.

**Other Ingredients:** hypromellose (veggie capsules), vegetable magnesium stearate, silica.

### RevitalMind™

Supports Memory, Concentration, and Mental Performance

**Suggested Use:** Take one capsule twice daily, preferably with meals.

**Serving Size:** 2 Capsules • **Servings Per Container:** 30

	Amount Per Serving	% DV**
Vitamin C <i>(as calcium ascorbate)</i>	100 mg	167%
Vitamin B6 <i>(as pyridoxine HCl and pyridoxal-5-phosphate)</i>	5mg	250%
Folate <i>[as (6S)-5-methyltetrahydrofolic acid, glucosamine salt (Quatrefolic®) and folic acid]</i>	400mcg	100%
Vitamin B12 <i>(as methylcobalamin)</i>	500mcg	8,333%
Sensori® <i>(as methylcobalamin)</i>	250mg	**

ashwagandha root and leaf extract (8% withanolide conjugates and 32% oligosaccharides) (Withania somnifera)

Mucuna pruriens seed extract 100mg \*\*\*  
Proprietary Blend: 850mg \*\*\*  
Acetyl-L-carnitine HCl, DMAE (dimethylaminoethanol) bitartrate, Blueberry fruit juice (from 10:1 concentrate), Natural e3® full-spectrum tocotrienol powder [min. 30% (5 mg) total tocotrienols and tocopherols], alpha-Glycerolphosphorylcholine (alpha-GPC), SerinAid® (50% soy-derived phosphatidylserine)

\*\*Daily Value (DV) not established

**Other ingredients:** Cellulose, rice flour, vegetable magnesium stearate and silica. Contains Soy.

### Silver MAX™ Liquid

Pure Silver Hydrosol™ Immune Support

Serving Size: 1 Tsp (5 ml) • Servings Per Cont 23.5 / 47

	Amount Per Serving	% DV**
Adult Serving		
Silver	50mcg	**
Children 4 years and older (1/2 tsp.) Serving		
Silver	25mcg	**

\*\*Daily Value not established

### Silver MAX™ First Aid Gel

Homeopathic Medicine • First Aid Gel

**Directions:** Clean affected area. Apply a liberal, consistent, layer of First Aid Gel. Leave wet or bandage for optimal results. Repeat 3 times per day or as often as needed to relieve symptoms. For sensitive skin.

#### Ingredients:

**Active:** Argentum Metallicum 10x, 20x and 30x HPUS. **Inactive:** Silver hydrosol, carbopol and sodium hydroxide

### X20™

Hydrate, Mineralize, & Revitalize with Xtreme X20

**Directions:** Drop an X20 sachet (tea bag) in 18-24 ounces (530 – 750 mL) of purified or bottled water. Shake for 10-15 seconds. Allow 5 minutes for X20 to transform your water before drinking.

**Serving size: 1-gram sachet**

Highly Active Calcium	947mg
Magnesium	34mg
Trace Minerals	14mg
(Including Chromium, Sodium and Potassium)	
L-Ascorbic Acid	5mg
Silver	Trace

U.S. Patent No. 4,463,031 and 4,540,584

### X20™ PM

Evening Mineral Complex with SBO's

**Suggested Use:** Take 2 capsules in the evening (at least 1 hour after a meal) with pure water (X20 treated water is ideal).

**Serving Size: 2 Capsules • Servings per bottle: 30**

	Amount Per Serving	% DV**
Vitamin D3 (cholecalciferol)	800 iu	200%
X20 Mineral Complex	1000mg	**
(Calcium, Magnesium and 70 Trace Minerals)		
SBO's	650mg	**

(Soil Based Organisms)

12 SBO's – American Type Culture Collection (ATCC) certified non-toxic cultures (3 Bacilli, 2 Pseudomonas, 2 Streptomyces, 1 Arthrobacter, 1 Azotobacter, 1 Trichoderma, 2 Lactobacillus, Humic acid, Fulvic acid, Saponin, Yucca Schidigera extract, Probioticenzymes (protease, amylase, lipase, cellulase), Hydrolyzed Polysaccharide Polymer, Maltodextrose, Amino Acid Proteinate Minerals: Boron, Calcium, Cobalt, Copper, Iron, Manganese, Magnesium, Sulfur and Zinc.

Percent daily values based on a 2,000 calorie diet  
\*\*Daily Values not established

### Pet20™

The Ultimate Pet Treat

**Suggested Use:** Drop a Pet20™ packet™ in 25 ounces of purified, tap or bottled water. Shake or stir for 10-15 seconds. Allow 10 minutes for Pet20 to transform your pet's water. Pour Pet20 water into Pet's dish (excluding packet).

**Serving Size: 1-gram packet • Servings per packets: 30**

	Amount Per Serving	% DV**
Highly Active Calcium	947mg	
Magnesium	34mg	
Trace Minerals	14mg	
(including Chromium, Sodium and Potassium)		
L-ascorbic acid	5mg	

### Xooma BLAST™

Healthy Never Tasted So Good

**Serving Size: 1 Packet(4g) • Servings Per Container: 20**

	Amount Per Serving	% DV**
Calories	5	
Total Fat	0g	0%
Sodium	0mg	0%
Total Carbohydrate	1g	0%
Sugars	1g	
Protein	0g	
Calcium	Vitamin C 100%	
Vitamin D 15%	Vitamin E 15%	
Thiamin 15%	Vitamin B6 15%	

Natural cane sugar, Citric acid, Erythritol, N&A flavors, Stevia leaf extract, Amla extract, Grape seed extract, Coffee bean extract, Nutrients from natural whole food concentrate of [Tomato, Broccoli, Carrot, Shitake mushrooms, Cranberry, Apple, Orange], Ascorbic acid, Natural colors. Not a significant source of calories from fat, saturated fat, trans fat, cholesterol, dietary fiber, calcium, iron.

\*Percent Daily Values are based on a 2,000 calorie diet

**NOTE:** All ingredient listings were current at the time of printing this publication. However, product availability and ingredients are subject to change at any time and may not be accurately reflected here. Please consult with your Xooma Marketing Representative for the most current products, prices and ingredient listings.

\*The statements in this catalog have not been evaluated by the U.S. Food and Drug Administration. These products are not intended to diagnose, treat, cure or prevent any disease.

